

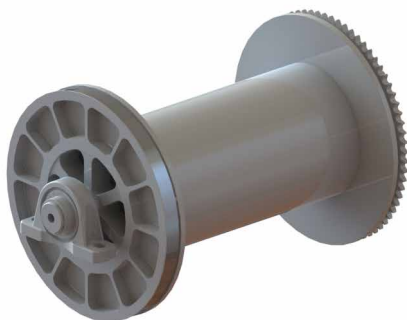
# Drums

## Drums Boxes

In order to help you in your drums management, Wilitec drums are fully compatible with the NOV ASEP drums series 06 BC and SC; means ASEP drums can be used on Wilitec units and Wilitec drums on NOV ASEP units.

The drum box is a single piece design, steel frame construction, and can accommodate all types of Wilitec drums. Forklift pockets and lifting padeyes are integrated into frame structure.

Full compatibility  
with the NOV Elmar  
units (ex- ASEP).



**Model W06W-F24C14 (slickline)**  
**Dimensions & Weights (excluding wire)**

|        |           |     |
|--------|-----------|-----|
| drum   | mm Flange | 600 |
|        | mm Core   | 350 |
|        | mm Width  | 700 |
| weight | kg        | 360 |
|        | lbs       | 794 |



**Model W06W-F24C10 (braidedline)**  
**Dimensions & Weights (excluding wire)**

|        |           |     |
|--------|-----------|-----|
| drum   | mm Flange | 700 |
|        | mm Core   | 260 |
|        | mm Width  | 700 |
| weight | kg        | 338 |
|        | lbs       | 745 |

| Drum Capacity                |    | 0.108" | 0.125" | 3/16" | 7/32" | 1/4"  |
|------------------------------|----|--------|--------|-------|-------|-------|
| <b>W06W-F24C14</b><br>(SC06) | m  | 19600  | 14660  | 6470  | -     | -     |
|                              | ft | 64400  | 48100  | 21240 | -     | -     |
| <b>W06W-F24C14</b><br>(BC06) | m  | -      | -      | 11550 | 8350  | 6330  |
|                              | ft | -      | -      | 37900 | 27400 | 20780 |



**Model DB-W700-02**  
**Dimensions & Weights (excluding drum & wire)**  
**Lifting Padeyes certified as per EN 12079**

|                    |    |                    |     |                    |
|--------------------|----|--------------------|-----|--------------------|
| box (L x W x H)    | m  | 1.30 x 0.93 x 0.85 | ft  | 4.26 x 3.06 x 2.79 |
| weight : Max Gross | kg | 2500               | lbs | 5512               |
| Tare Mass          | kg | 350                | lbs | 772                |
| Pay Load           | kg | 2150               | lbs | 4740               |



**Model DB-W700-01**  
**Dimensions & Weights (excluding drum & wire)**  
**Full Structural certification DNV 2.7-1 / EN12079**

|                    |    |                    |     |                    |
|--------------------|----|--------------------|-----|--------------------|
| box (L x W x H)    | m  | 1.31 x 0.93 x 1.00 | ft  | 4.26 x 3.06 x 3.28 |
| weight : Max Gross | kg | 2500               | lbs | 5512               |
| Tare Mass          | kg | 350                | lbs | 772                |
| Pay Load           | kg | 2150               | lbs | 4740               |

| Drum Weight<br>with Cable    |     | Drum Empty | 0.108" |       | 0.125" |       | 3/16" |       | 7/32" |       | 1/4"  |       |
|------------------------------|-----|------------|--------|-------|--------|-------|-------|-------|-------|-------|-------|-------|
|                              |     |            | 20000  | 25000 | 20000  | 25000 | 20000 | 25000 | 25000 | 25000 | 25000 | 25000 |
| <b>W06W-F24C14</b><br>(SC06) | kg  | 360        | 300    | 375   | 390.4  | 488   | 774   | -     | -     | -     | -     | -     |
|                              | lbs | 794        | 661    | 827   | 861    | 1076  | 1707  | -     | -     | -     | -     | -     |
| <b>W06W-F24C14</b><br>(BC06) | kg  | 338        | -      | -     | -      | -     | -     | 968   | 1265  | 1676  | -     | -     |
|                              | lbs | 745        | -      | -     | -      | -     | -     | 2134  | 2789  | 3695  | -     | -     |

certificate by



contact us : [info@wilitec.com](mailto:info@wilitec.com) | visit us : [www.wilitec.com](http://www.wilitec.com)

