

# **SPARE PART LIST**

## **40FT MAST**

***WILITEC PTE. LTD.***

*51 GOLDHILL PLAZA*

*Singapore 308900*

*Email : [info@wilitec.com](mailto:info@wilitec.com)*



## **GENERAL INFORMATION**

**This parts book contains the description of the parts for 40FT MAST.**

### **HOW TO USE THIS PARTS BOOK**

- 1. Illustrations are shown every assembly group and each part is denoted with index number on outgoing line. The index number agrees with the key number of the lists.**
  
- 2. How to order the service parts**
  - (1) When ordering service parts, please be sure to give the following information.**

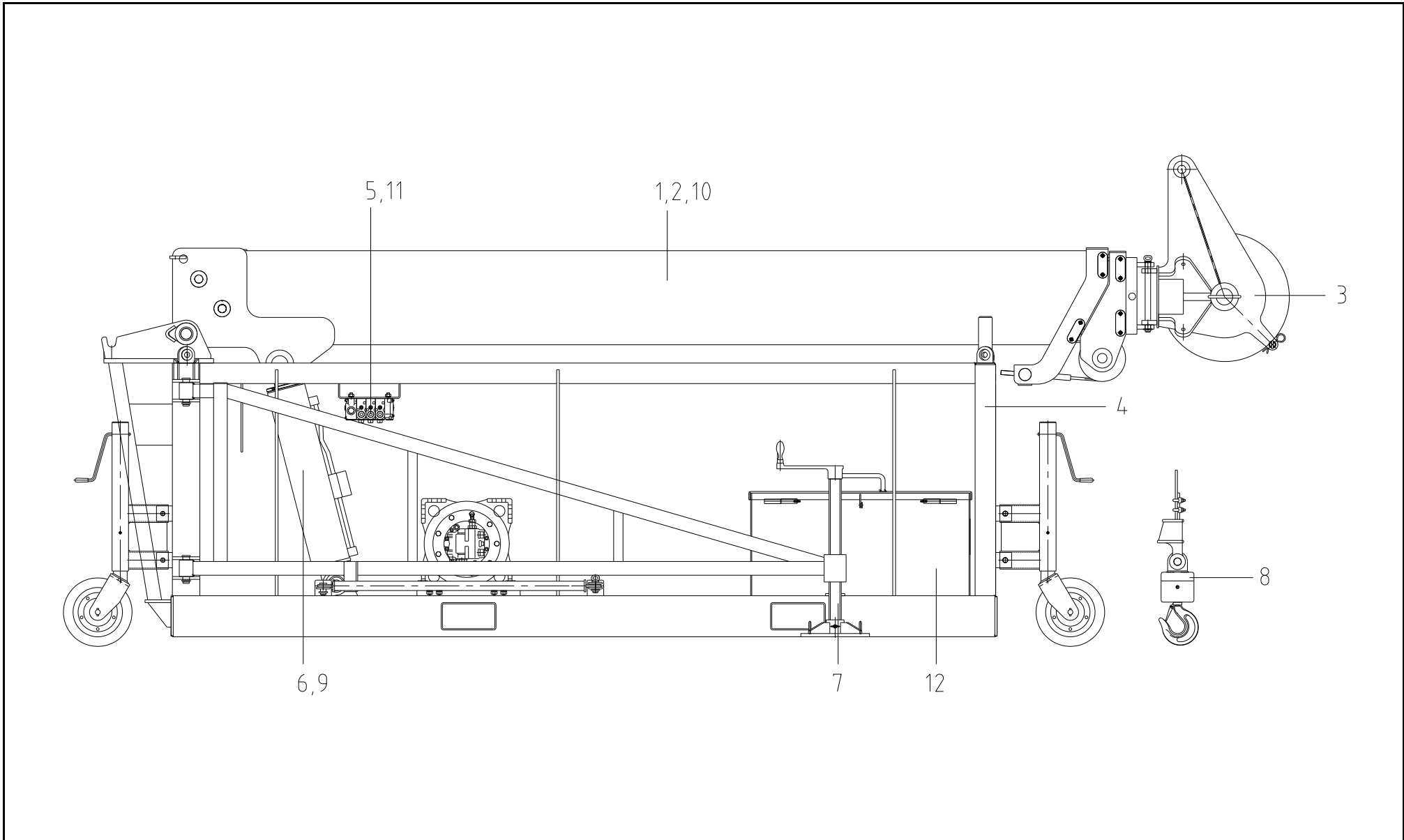
<b>① CRANE MODEL</b>	<b>② SERIAL No.</b>
<b>③ ASSEMBLY GROUP NAME</b>	<b>④ PART NAME</b>
<b>⑤ PART No.</b>	<b>⑥ QUANTITY</b>
  - ⑦ PAGES AND INDEX No. OF ORDERING PARTS DESCRIBED IN THE PARTS BOOK. ( e.g. 40FT -5: 0, No.3 )**
  - (2) Use "Genuine Parts" exclusively for servicing your crane. No warranty can be given on a trouble caused by using a part except genuine parts.**
  - (3) Purchase the service parts at your nearest dealer or service shop.**

**(NOTE) In accordance with our policy of constant improvement, all parts are subject to change without notice or obligation.**

---



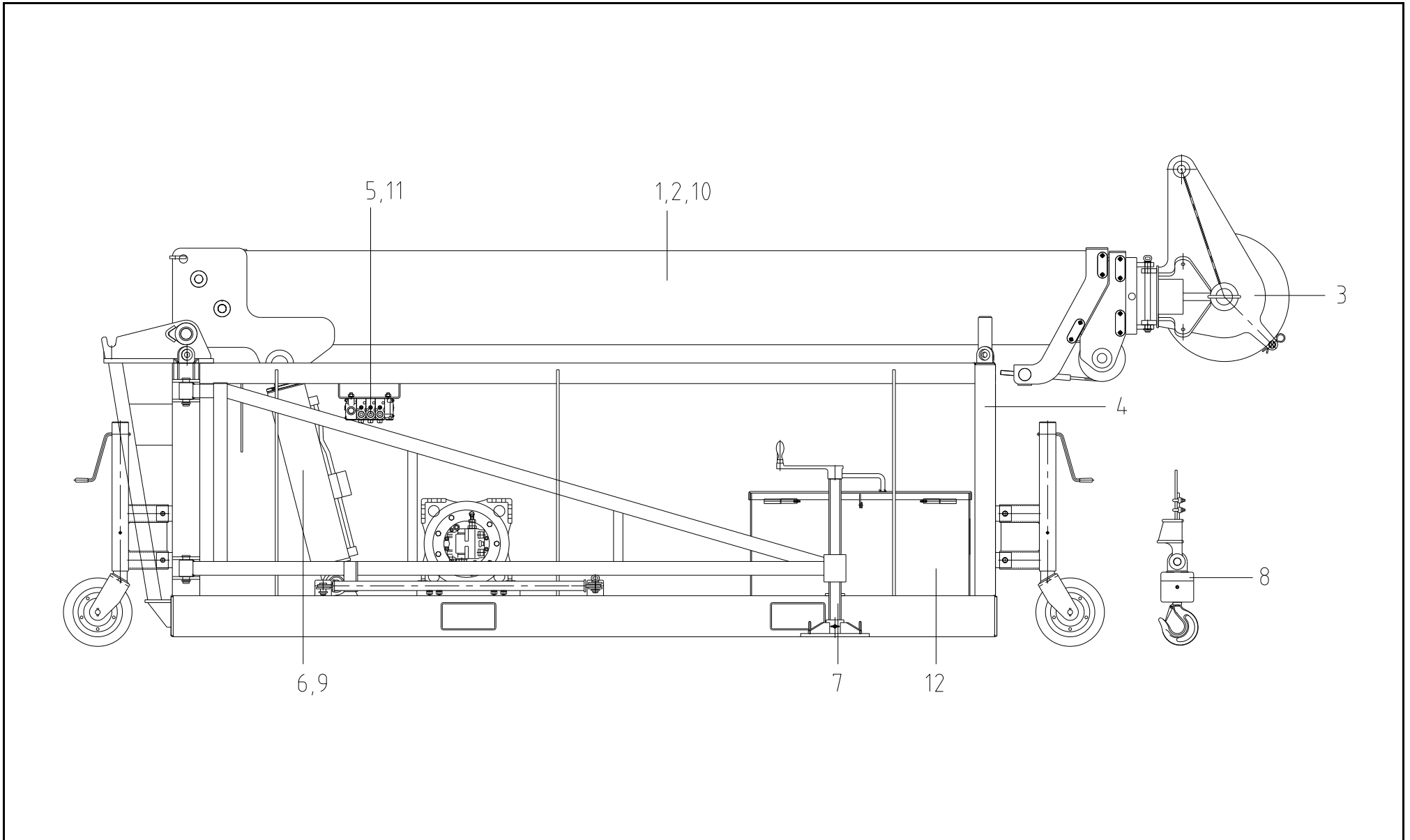
	<b>MAIN SUBDIVISIONS</b>	<b>40FT-0:0</b> <b>2019.06</b>
--	--------------------------	-----------------------------------



	<b>MAIN SUBDIVISIONS</b>		<b>40FT-0:0 2019.06</b>
<b>NO.</b>	<b>SECTION NAME</b>	<b>FIG. NO.</b>	<b>PAGE</b>
0	MAIN SUBDIVISIONS	40FT-0:0	2
1	40` MAST ASS`Y	40FT-1:0	6
2	40` MAST TELESCOPIC CYLINDER ASS`Y	40FT-2:0	12
3	SHEAVE ASS`Y	40FT-3:0	16
4	FRAME ASS`Y	40FT-4:0	18
5	HYDRAULIC LINE	40FT-5:0	22
6	LIFTING CYLINDER ASS`Y	40FT-6:0	26
7	OUTRIGGER ASS`Y	40FT-7:0	28
8	EQUIPMENTS	40FT-8:0	30
9	VALVE, COUNTER BALANCE(LIFTING CYL`D)	40FT-9:0	31



10	VALVE, COUNTER BALANCE(TELESCOPIC CYL'D)	40FT-10:0	34
11	VALVE, MAIN CONTROL	40FT-11:0	36
	<b>MAIN SUBDIVISIONS</b>		<b>40FT-0:0</b> <b>2019.06</b>

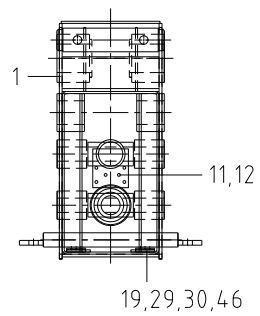
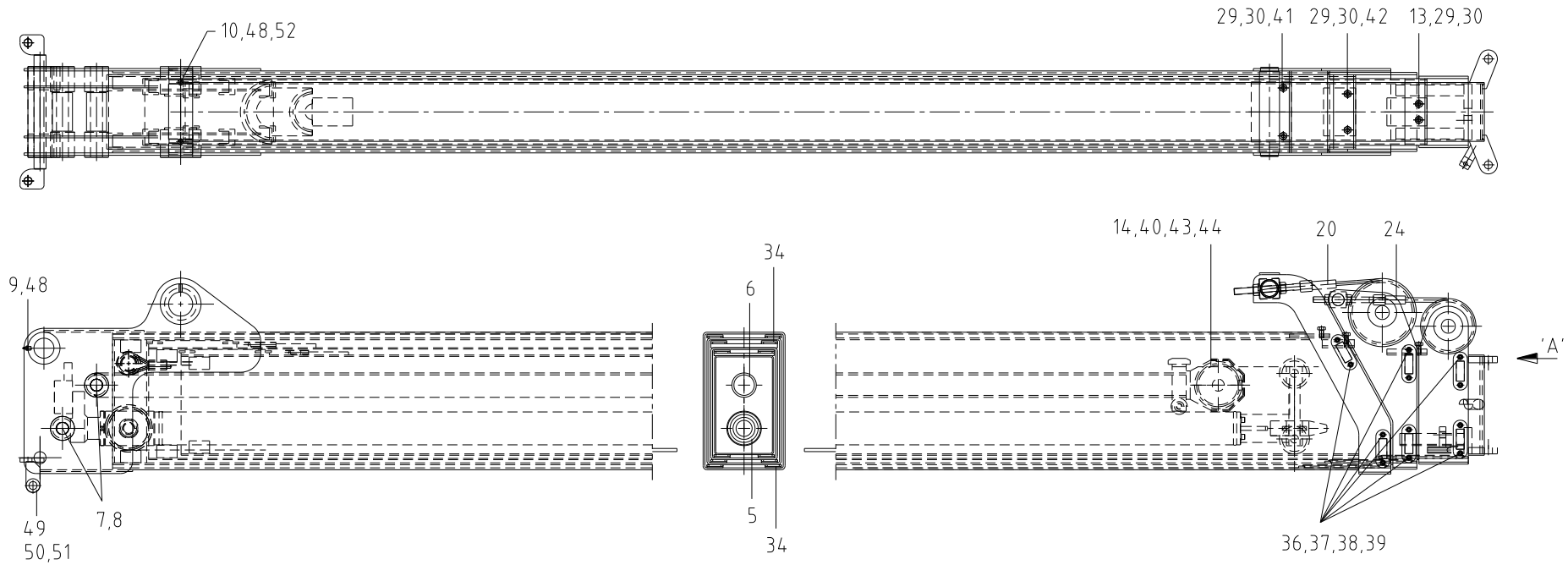




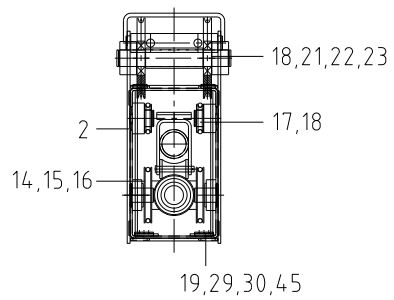
	<b>MAIN SUBDIVISIONS</b>		<b>40FT-0:0 2019.06</b>
NO.	SECTION NAME	FIG. NO.	PAGE
12	TRIFOR KIT	40FT-12:0	38



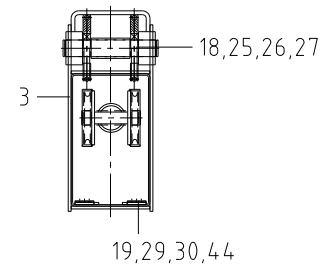
	<b>40` MAST ASS'Y</b>		<b>40FT-1:0</b> <b>2019.06</b>



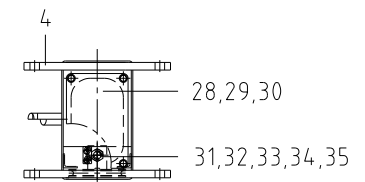
VIEW 'A' (1ST BOOM)



VIEW 'A' (2ND BOOM)



VIEW 'A' (3RD BOOM)

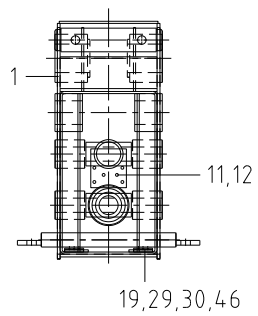
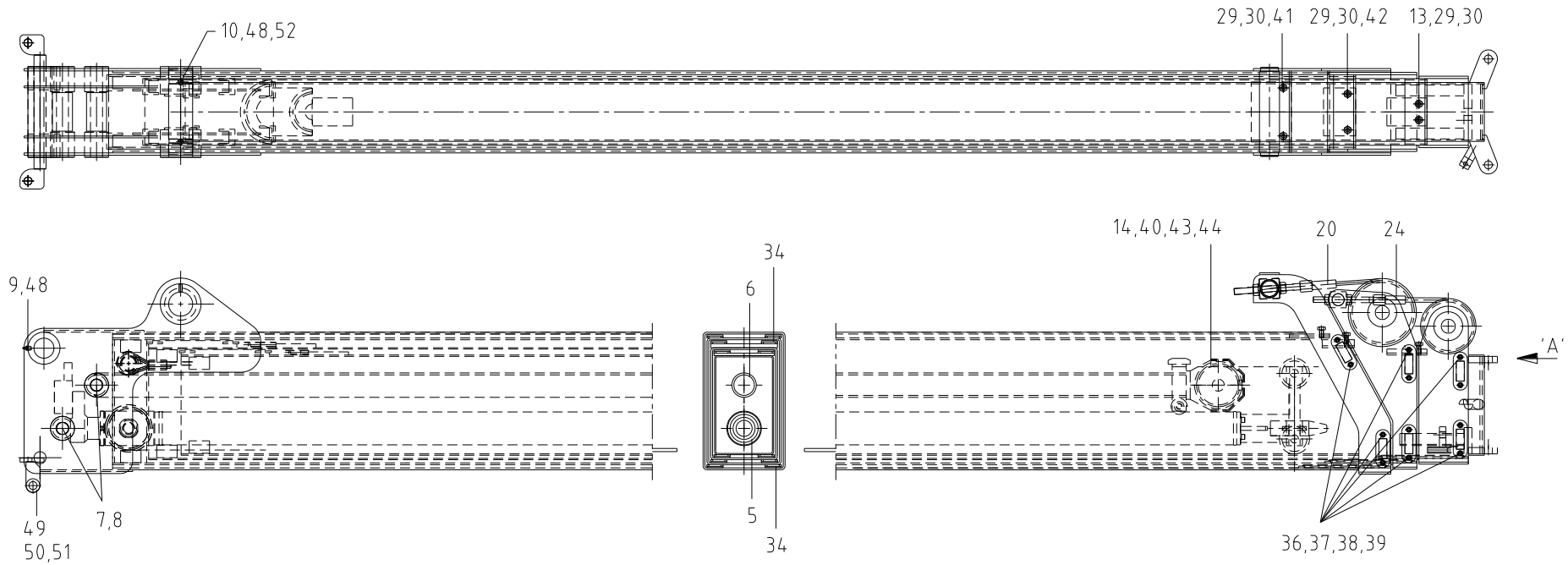


VIEW 'A' (4TH BOOM)

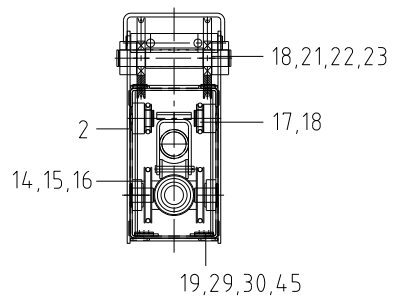
		<b>40` MAST ASS'Y</b>						<b>40FT-1:0 2019.06</b>	
NO.	PART NO.	DESCRIPTION	Q'TY	REMARK	NO	PART NO.	DESCRIPTION	Q'TY	REMARK
1~52	50 0630 O	40` MAST ASS'Y	1		12	61 6427 A	BOLT, HEX S/HEAD	4	BB6×45
1	50 0640 O	MAST, 1ST	1		13	50 0838 O	PAD, 3RD	1	
2	50 0650 O	MAST, 2ND	1		14	20 5725 O	PULLEY	4	
3	50 0710 O	MAST, 3RD	1		15	90 1532 O	RING, RETAINING	2	RB25
4	50 0720 O	MAST, 4TH	1		16	50 0962 O	SHAFT	2	
5	21 2447 O	BOOM TELESCOPIC CYL'D ASS'Y	1	REFER TO 40FT-2:0	17	50 0839 A	WIRE ROPE, RET	1	
6	50 0836 O	TUBE, GUIDE	1		18	90 1533 O	RING, RETAINING	6	RS35
7	60 7150 A	SHAFT, RETAINING	2		19	20 0138 O	PAD, SLIDE	6	
8	90 1531 O	RING, RETAINING	4	RS30	20	50 0840 A	WIRE ROPE, EXT 1	1	
9	21 7043 O	BUSHING , DU	2		21	50 0841 O	PULLEY	2	



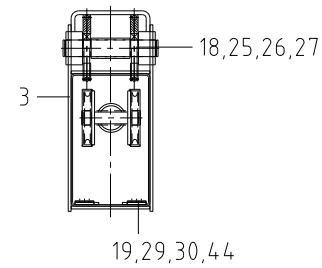
10	22 1872 O	BOLT, HEX HEAD	2	BA8 x 40	22	20 0129 O	SPACER	1	
11	20 6650 O	COUNTER BALANCE VALVE	1	REFER TO 40FT-10:0	23	60 7212 A	SHAFT, RETAINING	1	
<b>40` MAST ASS'Y</b>								<b>40FT-1:0</b>	<b>2019.06</b>



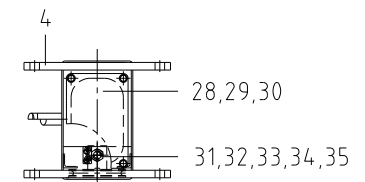
VIEW 'A' (1ST BOOM)



VIEW 'A' (2ND BOOM)



VIEW 'A' (3RD BOOM)



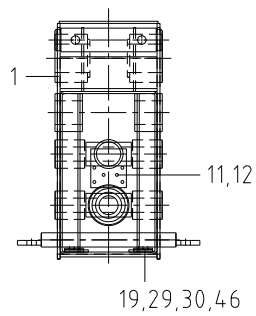
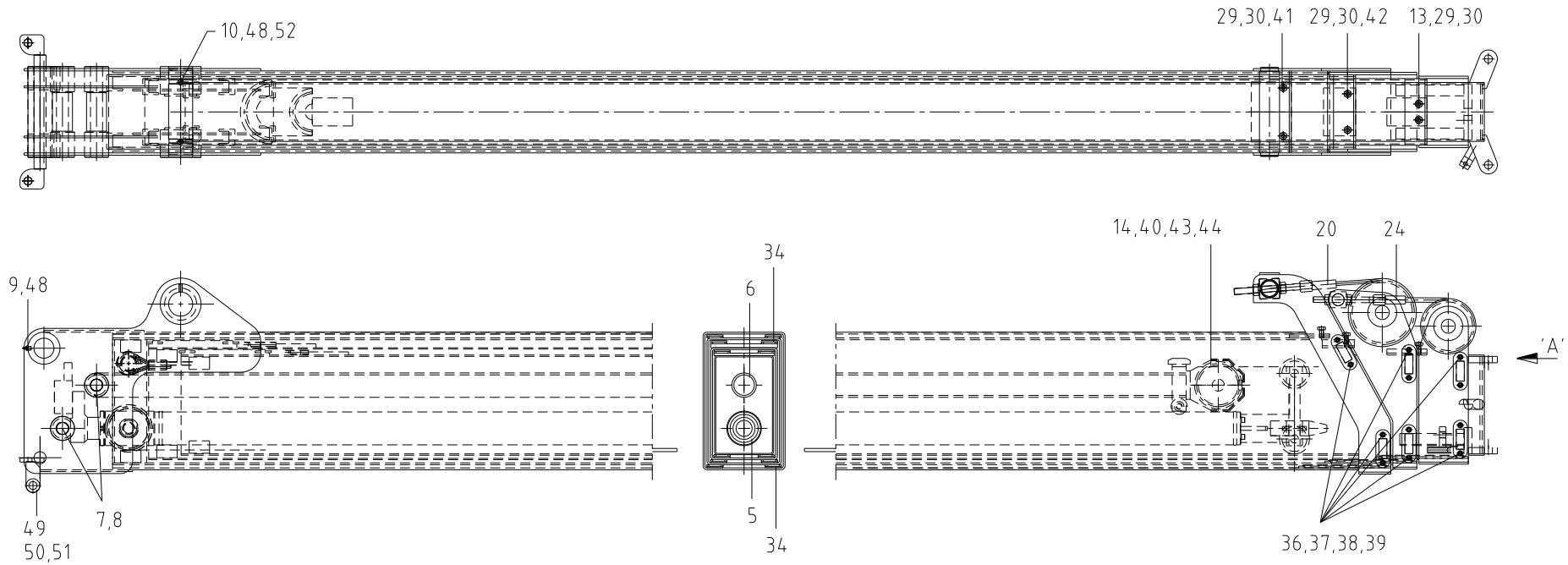
VIEW 'A' (4TH BOOM)

		<b>40` MAST ASS'Y</b>						<b>40FT-1:0 2019.06</b>	
NO.	PART NO.	DESCRIPTION	Q'TY	REMARK	NO	PART NO.	DESCRIPTION	Q'TY	REMARK
24	50 0842 O	WIRE ROPE, EXT 2	1		36	20 0135 O	PAD, SIDE	12	
25	50 0908 O	PULLEY	2		37	20 0136 O	COVER, PAD	12	
26	89 6124 O	SPSACER	1		38	20 0137 O	SPACER	32	
27	60 7204 A	SHAFT, RETAINING	1		39	89 9268 O	BOLT, HEX S/HEAD	26	BB8×25
28	20 0134 O	COVER	1		40	60 7250 A	SHAFT, RETAINING	1	
29	22 1871 O	BOLT, HEX HEAD	16	BA10×20	41	50 0844 A	PAD, 1ST	1	
30	62 6010 A	WASHER, SPRING	16	WS10	42	50 0845 B	PAD, 2ND	1	
31	20 6649 O	GUIDE, WIRE ROPE	1		43	90 1534 O	RING, RETAINING	2	RS40
32	61 1284 B	BOLT, HEX HEAD	1	BA16×180	44	50 0951 A	GUIDE, PAD	1	
33	20 0133 O	STOPPER	1		45	50 0952 A	GUIDE, PAD	1	

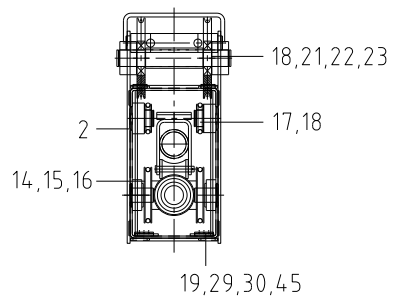


34	89 1177 O	PAD, SLIDE	12		46	50 0953 A	GUIDE, PAD	1	
35	62 6008 A	WASHER, SPRING	2	WS8	47	63 6004 A	NIPPLE, GREASE	2	
<b>40` MAST ASS'Y</b>								<b>40FT-1:0</b>	<b>2019.06</b>

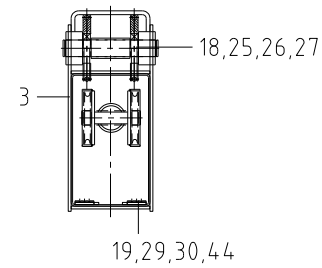




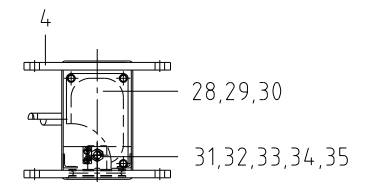
VIEW 'A' (1ST BOOM)



VIEW 'A' (2ND BOOM)



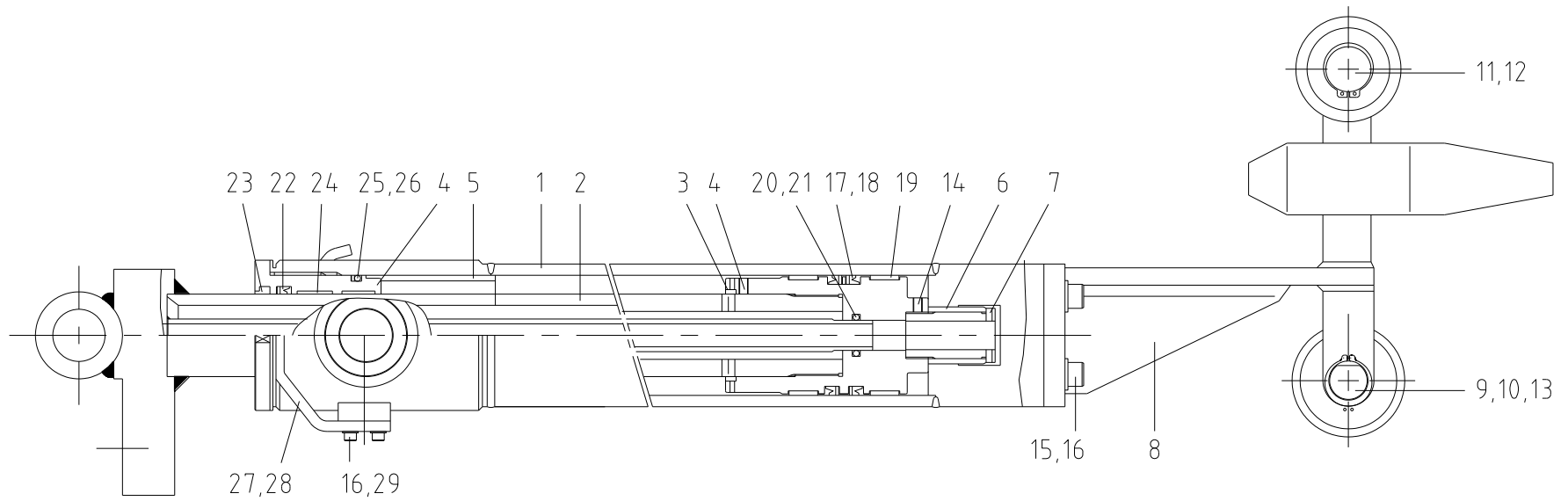
VIEW 'A' (3RD BOOM)



VIEW 'A' (4TH BOOM)

		<b>40` MAST ASS'Y</b>						<b>40FT-1:0 2019.06</b>	
NO.	PART NO.	DESCRIPTION	Q'TY	REMARK	NO	PART NO.	DESCRIPTION	Q'TY	REMARK
48	62 1017 B	NUT, HEX	2	NA8					
49	60 7024 A	SHAFT	1						
50	20 0154 O	ROLLER	1						
51	90 1535 O	RING, RETAINING	2	RS20					
52	50 0633 A	SHAFT	1						

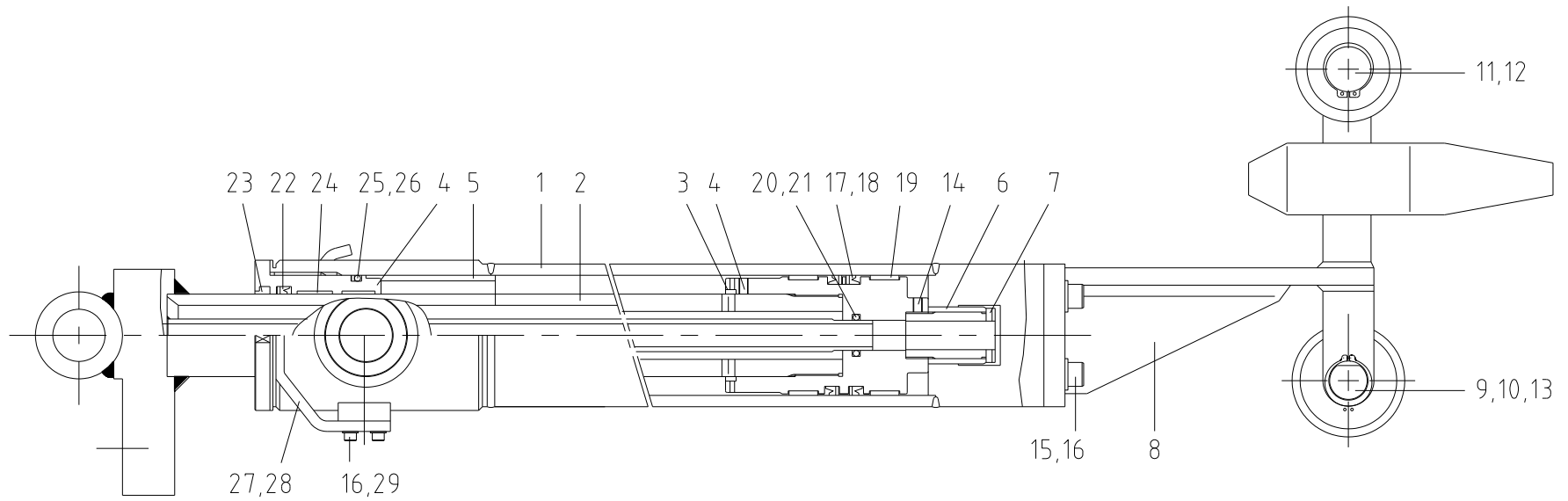
	<b>40` MAST TELESCOPIC CYLINDER ASS'Y</b>							<b>40FT-2:0</b> <b>2019.06</b>	




		<b>40` MAST TELESCOPIC CYLINDER ASS'Y</b>					<b>40FT-2:0 2019.06</b>		
NO.	PART NO.	DESCRIPTION	QTY	REMARK	NO	PART NO.	DESCRIPTION	Q'TY	REMARK
1~29	21 2447 O	40` MAST TELESCOPIC CYL'D ASS'Y	1	CS 66 T00 00	12	63 5006 A	RING, RETAINING	2	RS15
1	30 4700 O	TUBE ASS'Y	1	CS 66 T00 10	13	63 5011 A	RING, RETAINING	2	RS20
2	30 4701 O	ROD ASS'Y	1	CS 66 T00 20	14	61 4377 A	SCREW, SET(FLAT END)	2	BV6×6
3	30 0022 A	PISTON	1	SH 16 T10 40-01	15	61 6072 B	BOLT, HEX S/HEAD	4	BB8×30
4	30 1298 O	COVER , ROD	1	SH 46 T10 40	16	62 6007 A	WASHER, SPRING	8	WS8
5	30 4702 O	SPACER	1	SH 48 T10 40	17	*	PISTON PACKING	1	
6	30 0025 O	RING, CUSHION	1	SS 33 T10 70	18	*	RING, BACK-UP	2	
7	30 0026 O	GUIDE, CUSHION	1	SS 33 T10 80	19	*	RING.,WEAR	2	
8	30 4703 O	BRACKET ASS'Y	1	CS 66 T00 50	20	*	O-RING	1	
9	30 4704 O	SHAFT, ROLLER	1	SH 39 T20 60	21	*	RING, BACK-UP	2	



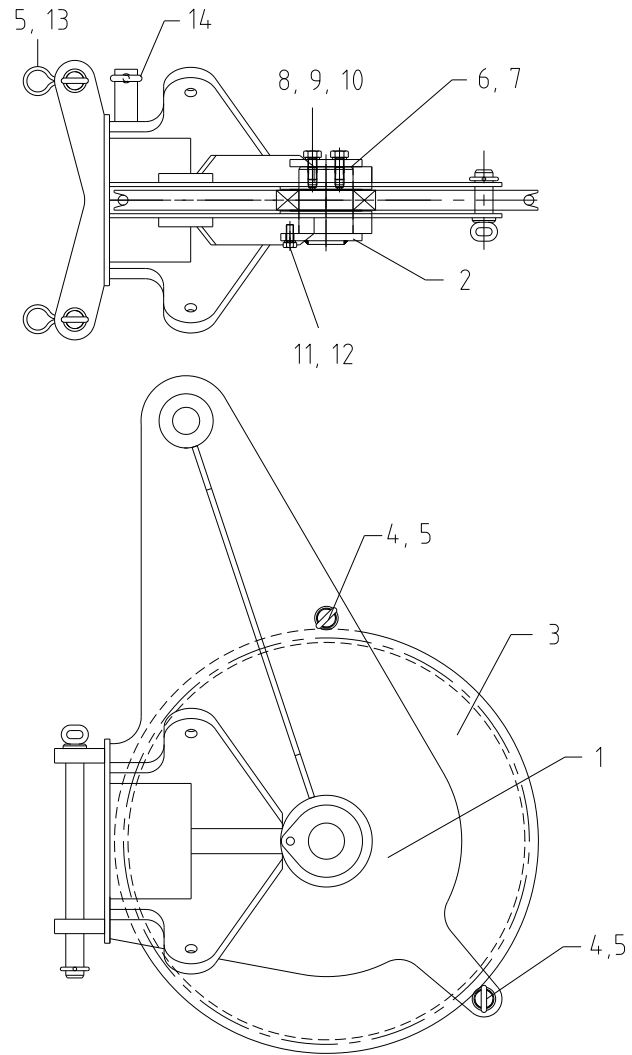
10	30 4705 O	ROLLER, GUIDE	1	CS 66 T00 60	22	*	ROD PACKING	1	
11	30 4706 O	ROLLER, GUIDE	2	CS 66 T00 70	23	*	WIPER, DUST	1	
<b>40` MAST TELESCOPIC CYLINDER ASS'Y</b>								<b>40FT-2:0</b>	<b>2019.06</b>



 CSM		40` MAST TELESCOPIC CYLINDER ASS'Y						40FT-2:0 2019.06	
NO.	PART NO.	DESCRIPTION	QTY	REMARK	NO	PART NO.	DESCRIPTION	QTY	REMARK
24	*	RING, WEAR	2						
25	*	O-RING	1						
26	*	RING, BACK-UP	1						
27	30 2890 A	BRACKET – R	1	CS 02 T30 30-01					
28	30 2891 A	BRACKET – L	1	CS 02 T30 40-01					
29	61 6066 B	BOLT, HEX S/HEAD	4	BB8×16					
-	30 5803 O	PACKING SET	1	PARTS MARKED *					



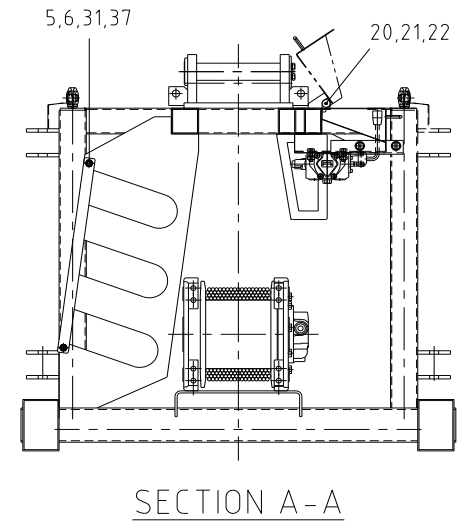
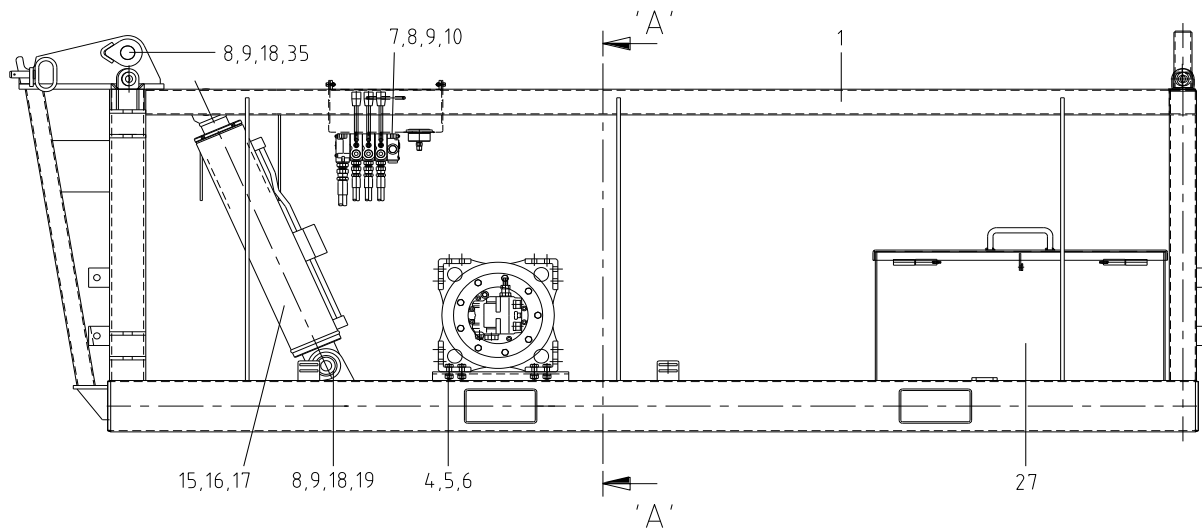
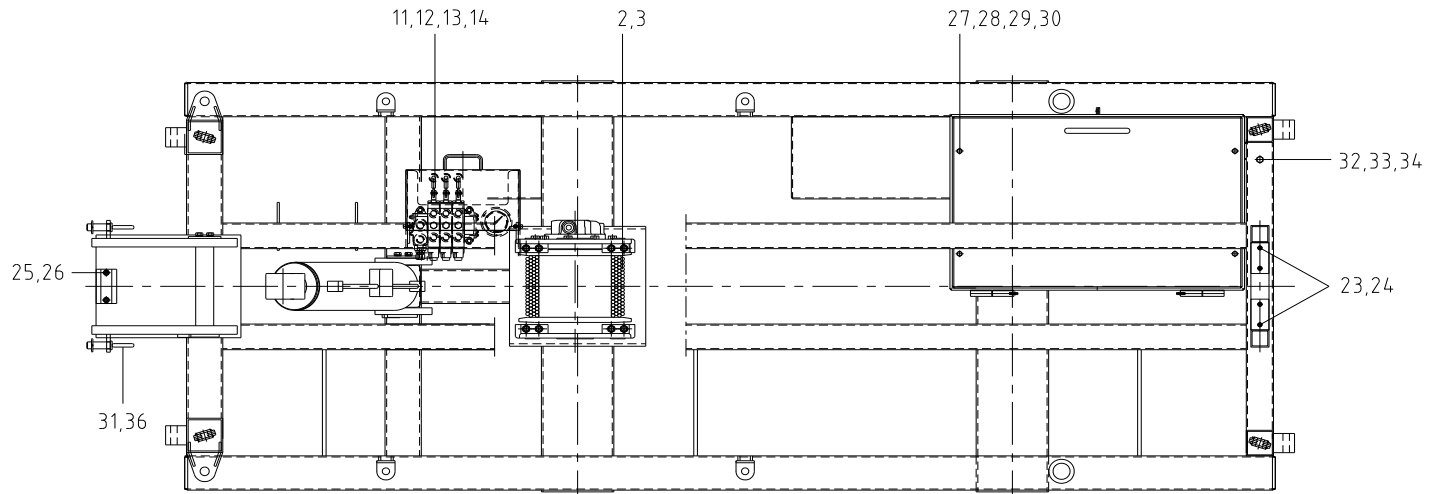
		<b>SHEAVE ASS'Y</b>						<b>40FT-3:0</b> <b>2019.06</b>	



		<b>SHEAVE ASS'Y</b>						<b>40FT-3:0 2019.06</b>	
NO.	PART NO.	DESCRIPTION	Q'TY	REMARK	NO	PART NO.	DESCRIPTION	Q'TY	REMARK
1~14	50 0801 O	SHEAVE ASS'Y	1		12	62 6008 A	WASHER, SPRING	1	NA8
1	50 0802 O	SHEAVE WA	1		13	50 0921 A	SHAFT	2	
2	50 0812 B	SHAFT	1		14	60 4010 A	PIN, SNAP	1	
3	50 0813 A	SHEAVE	1						
4	50 0772 O	PIN	2						
5	60 4009 A	PIN, SNAP	4						
6	50 0967 A	SPACER	2						
7	50 0968 A	SPACER	1						
8	20 2199 O	GUARD	1						
9	61 1088 B	BOLT, HEX HEAD	2	BA10 x 25					



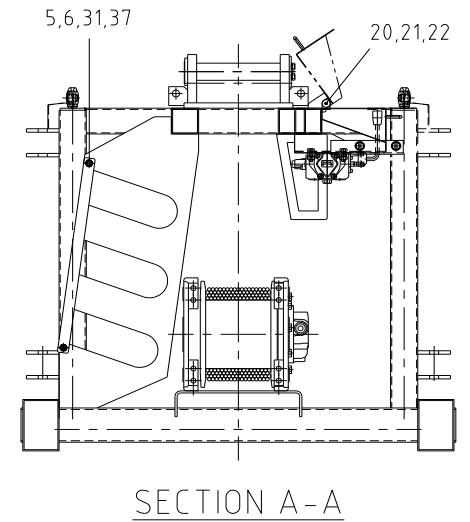
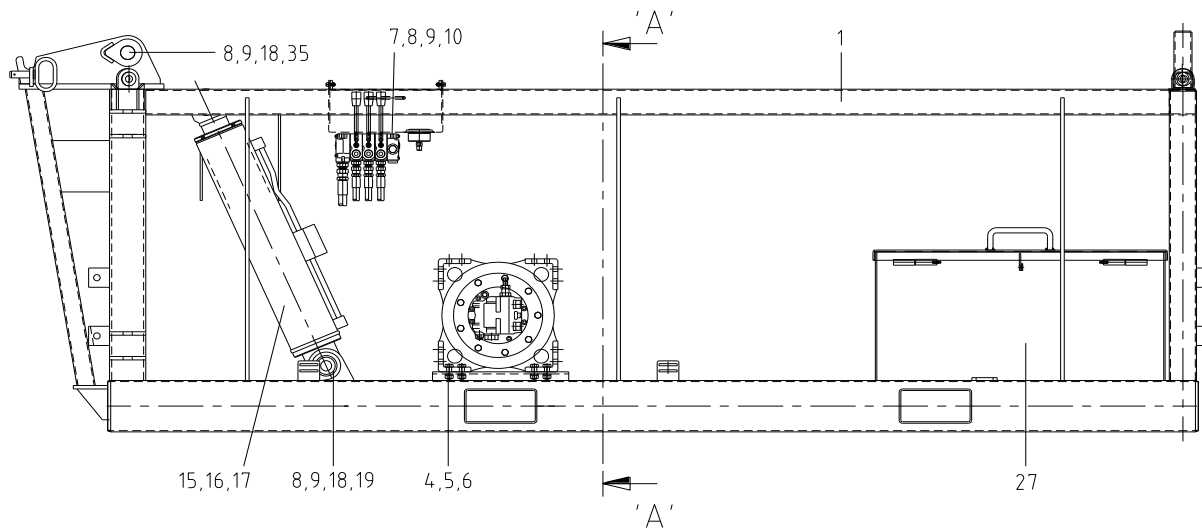
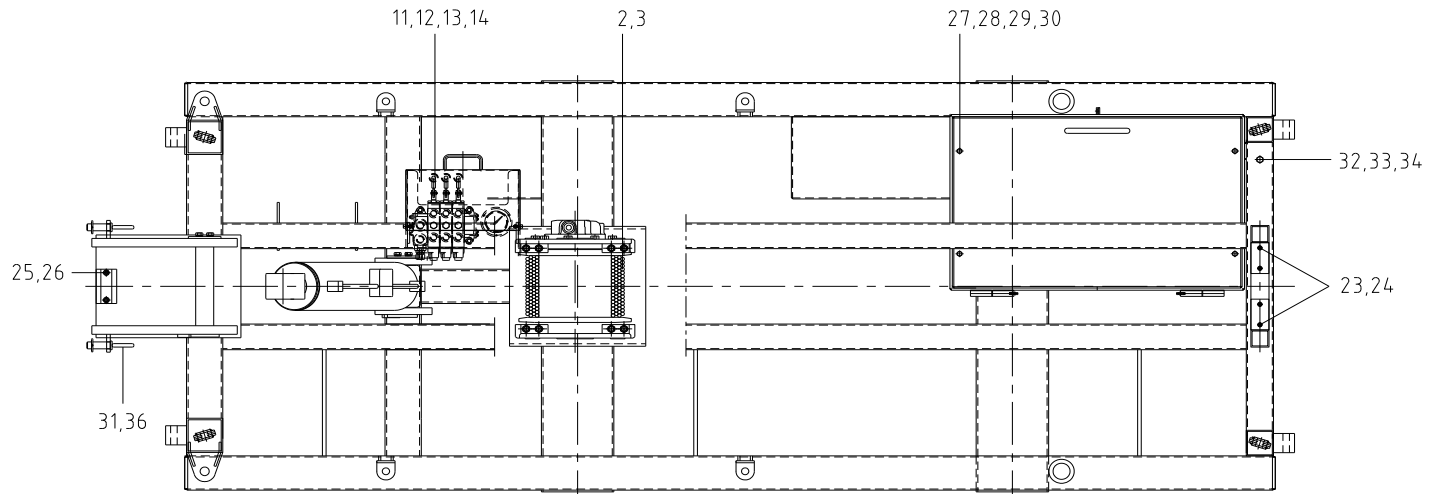
10	62 6010 A	WASHER, SPRING	2	NA10					
11	61 1067 B	BOLT, HEX HEAD	1	BA8 x 20					
<b>FRAME ASS'Y</b>								<b>40FT-4:0</b>	<b>2019.06</b>




		<b>FRAME ASS'Y</b>						<b>40FT-4:0 2019.06</b>	
NO.	PART NO.	DESCRIPTION	Q'TY	REMARK	NO	PART NO.	DESCRIPTION	Q'TY	REMARK
1~37		FRAME ASS'Y	1		12	20 0532 O	PIN	6	
1	50 1491 O	FRAME WA	1		13	20 0722 O	WASHER, BACK	6	
2	50 0635 O	WINCH ASS'Y	1		14	10 0198 O	KNOB	3	
3	50 0930 O	WIRE, ROPE	1		15	21 2446 O	LIFTING CYLINDER ASS'Y	1	REFER TO 40FT-6:0
4	61 1109 B	BOLT, HEX HEAD	14	BA12×40	16	20 7559 O	VALVE, COUNTER BALANCE	1	REFER TO 40FT-9:0
5	62 6012 A	WASHER, SPRING	14	WS12	17	61 6428 B	BOLT, HEX S/HEAD	4	BB6×50
6	62 1025 B	NUT, HEX	14	NA12	18	20 2199 O	PLATE	2	
7	50 0904 H	VALVE, MAIN CONTROL	1	REFER TO 40FT-11:0	19	50 0632 O	SHAFT	1	
8	62 6010 A	WASHER, SPRING	7	WS10	20	50 0596 O	COVER, LEVER	1	
9	22 1871 O	BOLT, HEX HEAD	7	BA10×20	21	61 1048 B	BOLT, HEX HEAD	2	BA6x20



10	62 1021 B	NUT, HEX	3	NA10	22	21 8608 O	NUT, SELF LOCK	2	
11	50 0928 C	LEVER	3		23	50 0926 A	PAD	2	
<b>FRAME ASS'Y</b>								<b>40FT-4:0</b>	<b>2019.06</b>

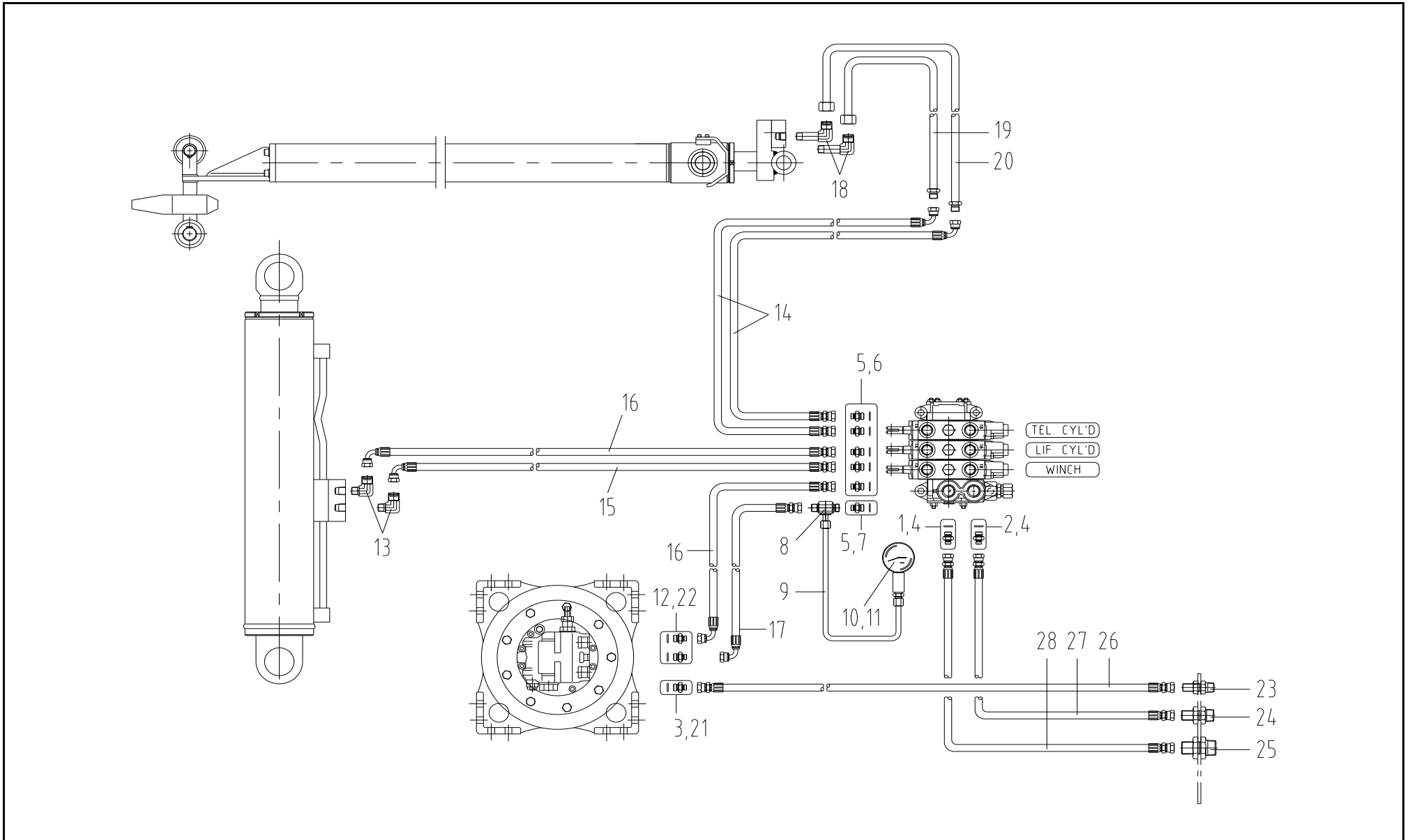




 <b>CSM</b>		<b>FRAME ASS'Y</b>						<b>40FT-4:0 2019.06</b>	
NO.	PART NO.	DESCRIPTION	Q'TY	REMARK	NO	PART NO.	DESCRIPTION	Q'TY	REMARK
24	90 1538 O	BOLT, HEX S/HEAD	4	BB6×25	36	50 0925 A	SHAFT ASS'Y	2	
25	90 1537 O	BOLT, HEX S/HEAD	2	BB10×30	37	50 0890 A	BAR, LOCKING	3	
26	50 0771 A	PLATE, CUSHION	1						
27	50 0961 A	BOX, STROAGE	1						
28	61 1071 B	BOLT, HEX HEAD	4	BA8×30					
29	62 6008 A	WASHER, SPRING	4	WS8					
30	62 1017 B	NUT, HEX	4	NA8					
31	60 4009 A	PIN, SNAP	2						
32	89 7224 O	BOLT, BRONZE	1						
33	89 7225 O	NUT, HEX	2						



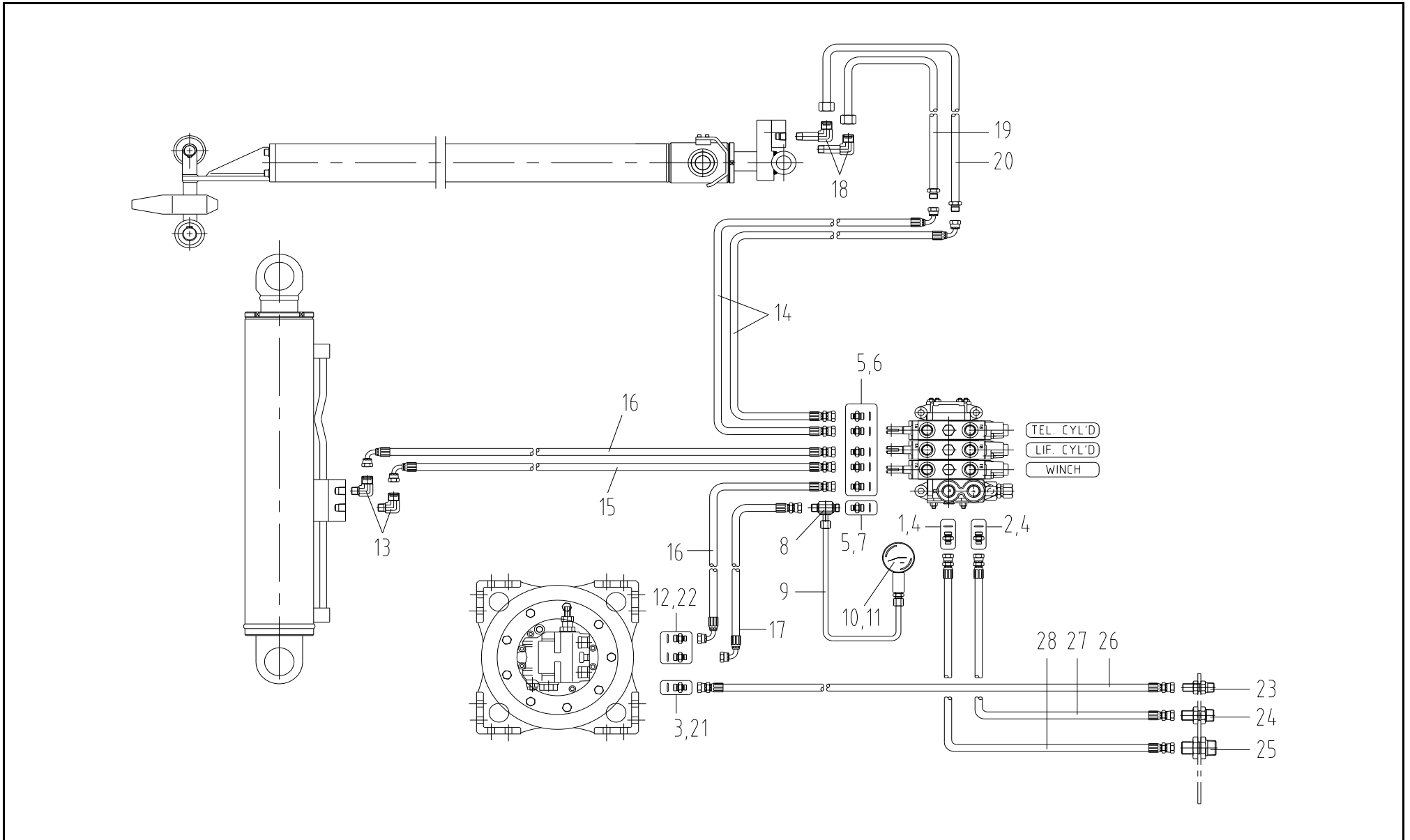
34	89 7226 O	WASHER, PLAIN	2						
35	50 0631 O	SHAFT	1						
<b>HYDRAULIC LINE</b>								<b>40FT-5:0</b>	<b>2019.06</b>




		<b>HYDRAULIC LINE</b>						<b>40FT-5:0 2019.06</b>	
NO.	PART NO.	DESCRIPTION	Q'TY	REMARK	NO	PART NO.	DESCRIPTION	Q' TY	REMARK
1~28		HYDRAULIC LINE	1		12	50 0763 O	CONECTOR, O-RING BOSS	2	PF3/8-UNF7/8
1	68 3109 A	NIPPLE, PF O-RING HOSE	1	NFOC1/2-PF3/4	13	68 3302 A	ELBOW, PT HOSE	2	ETC9
2	68 3108 A	NIPPLE, PF O-RING HOSE	1	NFOC1/2-PF1/2	14	66 1174 B	HOSE, H.P(HUCF)	2	3/8-1600-PF3/8
3	50 0764 A	NIPPLE	1		15	66 1132 B	HOSE, H.P(HUCF)	1	3/8-550-PF3/8
4	65 0019 A	O-RING	2	P18	16	66 1134 B	HOSE, H.P(HUCF)	2	3/8-600-PF3/8
5	65 0015 A	O-RING	6	P14	17	66 1138 B	HOSE, H.P(HUCF)	1	3/8-700-PF3/8
6	68 3105 A	NIPPLE, PF O-RING HOSE	5	NFOC3/8-3/8	18	20 6392 O	ELBOW, LONG MALE	2	
7	68 1114 A	NIPPLE, PF O-RING PIPE	1	NFOP15-PF3/8	19	50 0963 O	PIPE, HYD	1	
8	50 0766 A	TEE	1		20	50 0964 O	PIPE, HYD	1	
9	50 0767 E	PIPE, HYD	1		21	21 4341 O	O-RING FOR SAE BOSS	1	



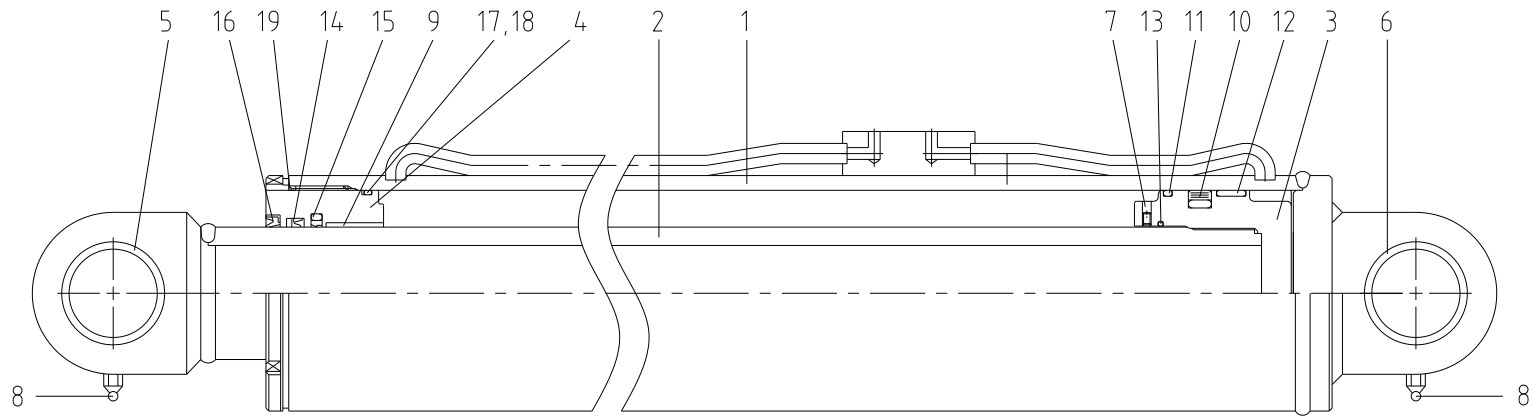
10	68 1807 A	NIPPLE, PT PIPE FEMALE	1	NTPF10-PT1/4	22	20 1977 O	O-RING FOR SAE BOSS	2	
11	22 4154 O	GAUGE, PRESSURE	1		23	21 4477 O	UNION, BULKHEAD	1	
<b>HYDRAULIC LINE</b>								<b>40FT-5:0</b>	<b>2019.06</b>



 <b>CSM</b>		<b>HYDRAULIC LINE</b>						<b>40FT-5:0 2019.06</b>	
NO.	PART NO.	DESCRIPTION	Q'TY	REMARK	NO	PART NO.	DESCRIPTION	Q' TY	REMARK
24	21 4478 O	UNION, BULKHEAD	1						
25	21 4479 O	UNION, BULKHEAD	1						
26	66 1198 A	HOSE, H.P(HUCF)	1	3/8-2400-PF3/8					
27	66 1446 B	HOSE, H.P(HUCF)	1	1/2-2800-PF1/2					
28	66 1686 A	HOSE, H.P(HUCF)	1	3/4-2800-PF3/4					

	<b>LIFTING CYLINDER ASS'Y</b>								<b>40FT-6:0</b> <b>2019.06</b>

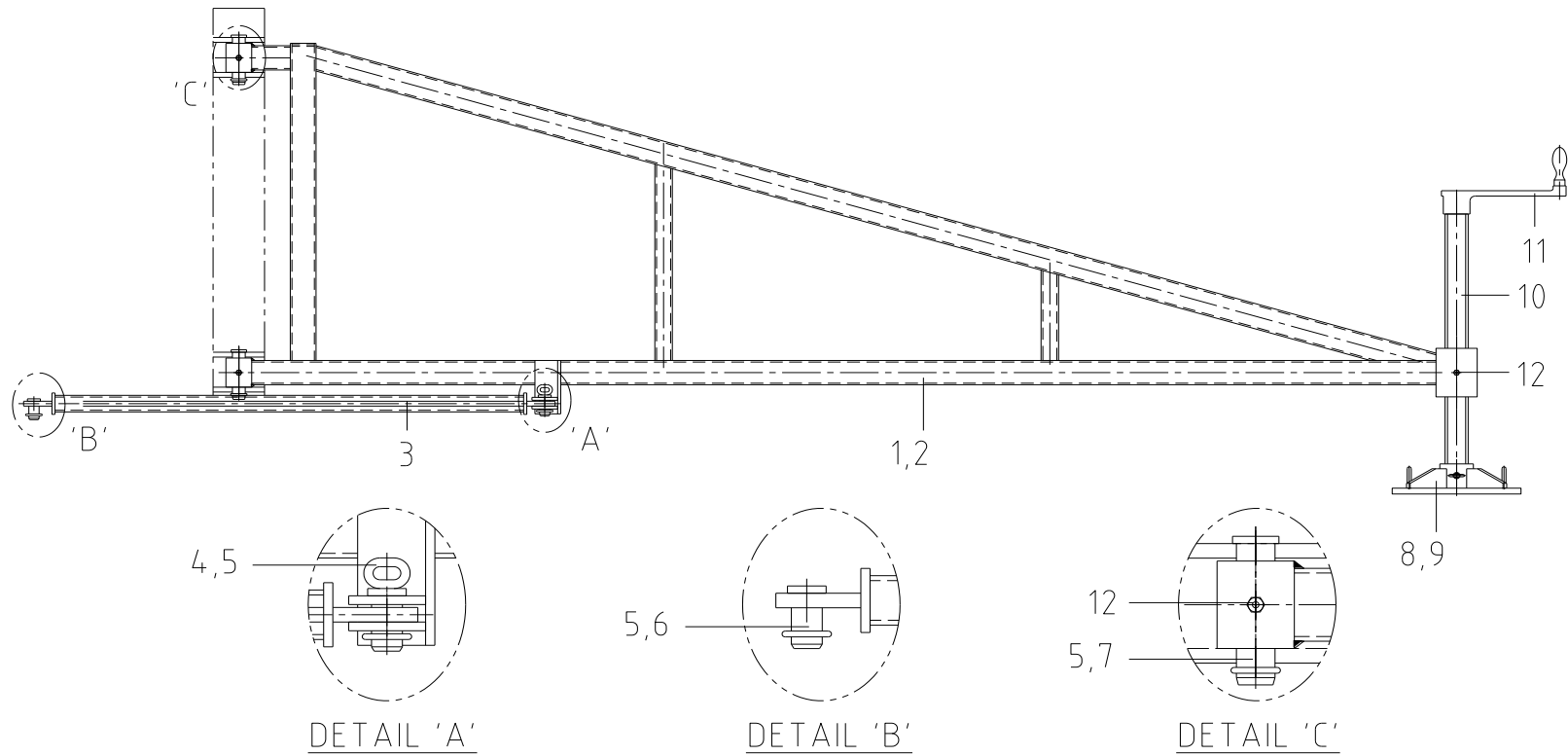




		<b>LIFTING CYLINDER ASS'Y</b>					<b>40FT-6:0 2019.06</b>		
NO.	PART NO.	DESCRIPTION	Q'TY	REMARK	NO	PART NO.	DESCRIPTION	Q'TY	REMARK
1~19	21 2446 O	LIFTING CYLINDER ASS'Y	1	CS 66 L00 00	12	*	RING, WEAR	1	PARTS MARKED *
1	30 4710 O	TUBE ASS'Y	1	CS 66 L00 10	13	*	O-RING	1	
2	30 4711 O	ROD ASS'Y	1	CS 66 L00 20	14	*	U-PACKING	1	
3	30 1282 O	PISTON	1	CS 06 L00 30- 01	15	*	RING, BUFFE	1	
4	30 0700 O	ROD COVER	1	HN 23 IBO 30- 01	16	*	WIPER, DUST	1	
5	30 0701 O	BUSHING, DX	1	CS 09 D00 30	17	*	O-RING	1	
6	30 0702 O	BUSHING, DX	2	CS 09 D00 40	18	*	RING, BACK-UP	1	
7	61 4378 A	SCREW, SET(FLAT END)	1	M6×8	19	*	O-RING	1	
8	63 6004 A	NIPPLE, GREASE	2		-	21 4383 O	PACKET SET	1	
9	63 3136 A	BUSHING, DU	1						

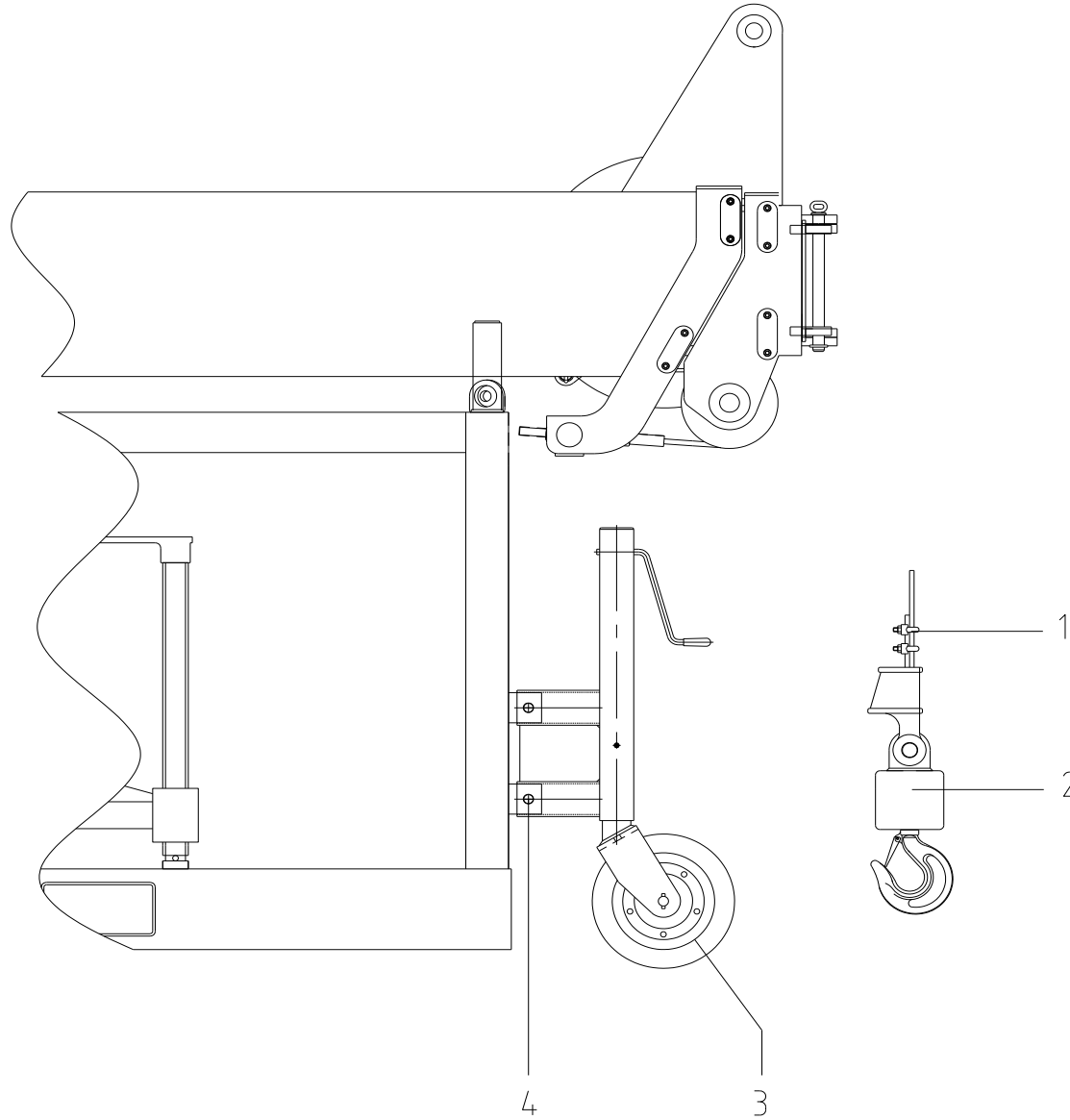


10	*	PACKING, PISTON	1							
11	*	RING, DUST	1							
		<b>OUTRIGGER ASS'Y</b>							<b>40FT-7:0</b> <b>2019.06</b>	



		<b>OUTRIGGER ASS'Y</b>						<b>40FT-7:0 2019.06</b>	
NO.	PART NO.	DESCRIPTION	Q'TY	REMARK	NO	PART NO.	DESCRIPTION	Q'TY	REMARK
1~12		OUTRIGGER ASS'Y	1		12	63 6004 A	NIPPLE, GREASE	6	
1	50 1492 O	OUTRIGGER WA(L.H)	1						
2	50 1493 O	OUTRIGGER WA(R.H)	1						
3	50 0830 O	SUPPORT	2						
4	50 0922 A	PIN	2						
5	60 4009 A	PIN, SNAP	8						
6	50 0966 O	PIN	2						
7	50 0634 A	PIN	4						
8	50 0835 O	SHOE, OUTRIGGER	2						
9	50 0923 O	BOLT, BUTTERFLY	4						

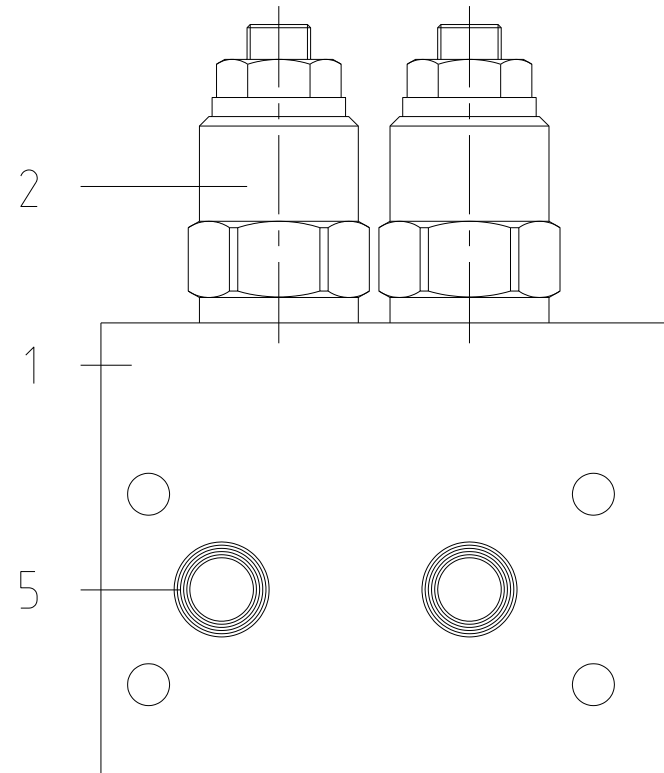
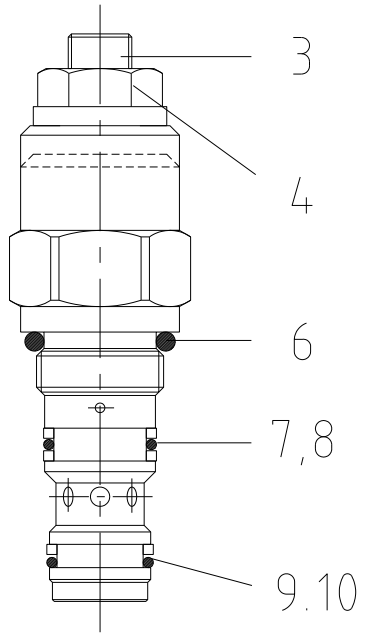
10	50 0924 O	SCREW	2						
11	50 0927 O	HANDLE	2						
<b>EQUIPMENTS</b>								<b>40FT-8:0</b>	<b>2019. 06</b>



		<b>EQUIPMENTS</b>						<b>40FT-8:0 2019.06</b>	
NO.	PART NO.	DESCRIPTION	Q'TY	REMARK	NO	PART NO.	DESCRIPTION	Q' TY	REMARK
1~4		EQUIPMENTS	1						
1	20 0296 O	CLIP, WIRE	2						
2	23 0962 O	HOOK ASS'Y	1						
3	50 1494 O	JACKING CASTER	4						
4	81 4176 O	PIN ASS'Y	8						



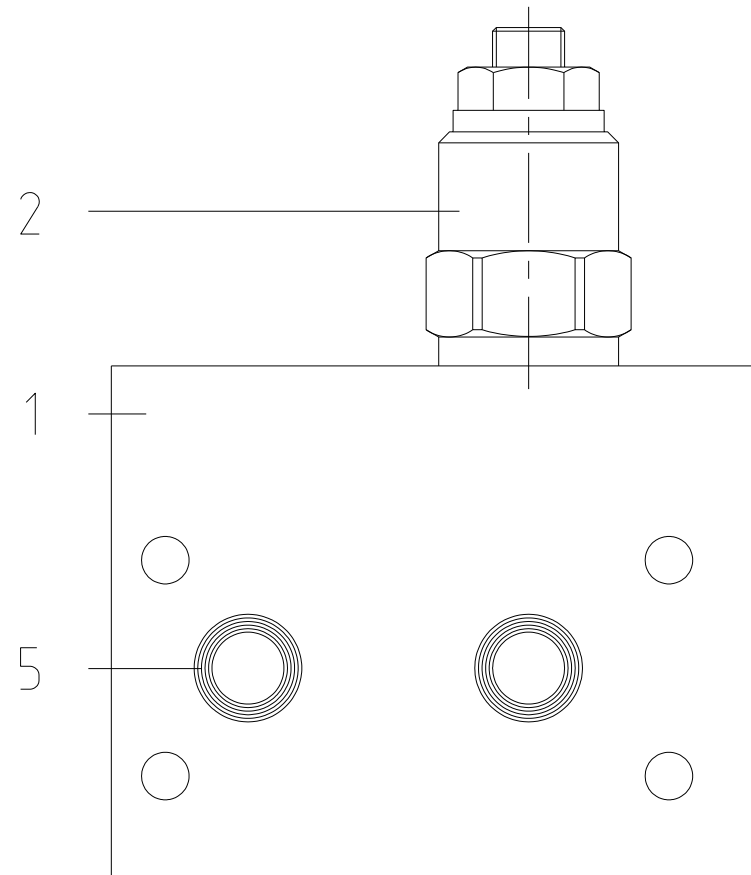
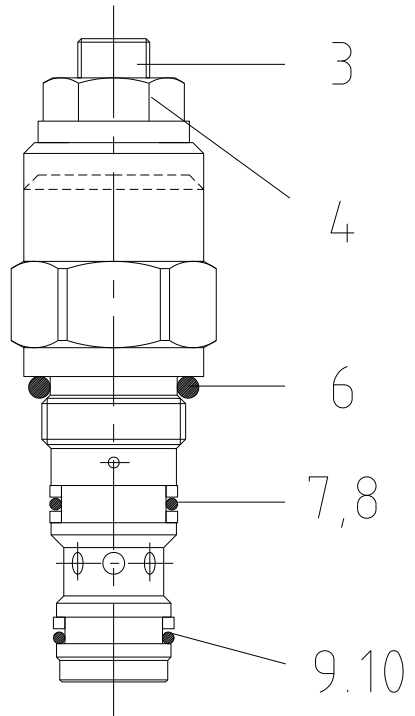
		<b>VALVE, COUNTER BALANCE(LIFTING CYL'D)</b>							<b>40FT-9:0</b>	<b>2019. 06</b>



		<b>VALVE, COUNTER BALANCE(LIFTING CYL'D)</b>					<b>40FT-9:0 2019.06</b>		
NO.	PART NO.	DESCRIPTION	Q'TY	REMARK	NO	PART NO.	DESCRIPTION	Q'TY	REMARK
1~10	20 7559 O	COUNTER BALANCE VALVE	1						
1	20 7571 O	BODY	1						
2	20 7570 O	CARTRIDGE	2						
3	-	SCREW	2						
4	-	NUT, SEAL LOCK	2						
5	*	O-RING	2						
6	*	O-RING	1						
7	*	O-RING	1						
8	*	RING, BACK-UP	2						
9	*	O-RING	1						



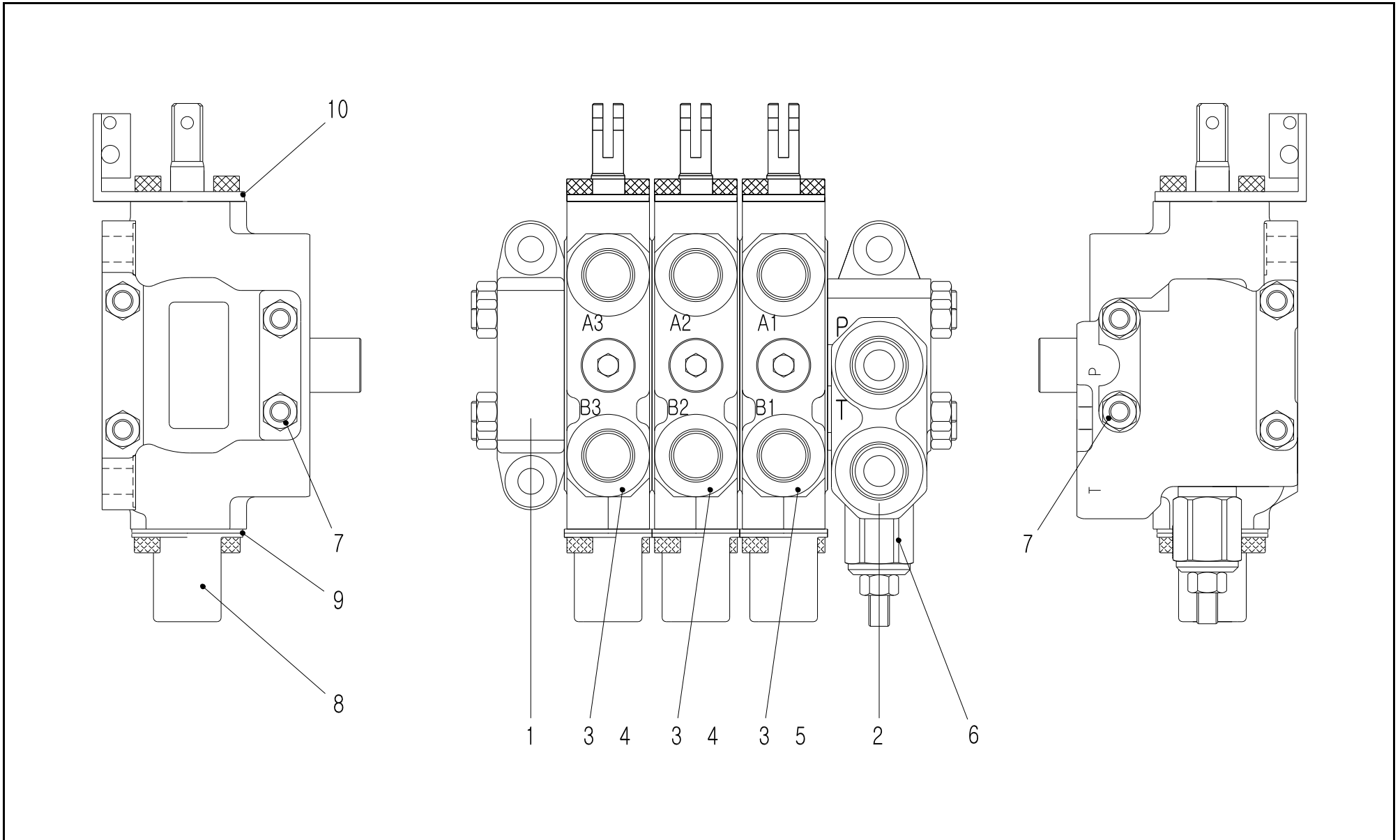
10	*	RING, BACK-UP	1					
-	-	SEAL KIT	1	PARTS MARKED*				
<b>VALVE, COUNTER BALANCE(TELESCOPIC CYL'D)</b>								<b>40FT-10:0 2019.06</b>



		<b>VALVE, COUNTER BALANCE(TELESCOPIC CYL'D)</b>					<b>40FT-10:0 2019.06</b>		
NO.	PART NO.	DESCRIPTION	Q'TY	REMARK	NO	PART NO.	DESCRIPTION	Q'TY	REMARK
1~10	20 6650 O	VALVE, COUNTER BALANCE	1						
1	20 4388 O	BODY	1						
2	20 4389 O	CARTRIDGE	1						
3	-	SCREW	1						
4	-	NUT, HEX	1						
5	*	O-RING	2						
6	*	O-RING	1						
7	*	O-RING	1						
8	*	RING, BACK-UP	2						
9	*	O-RING	1						



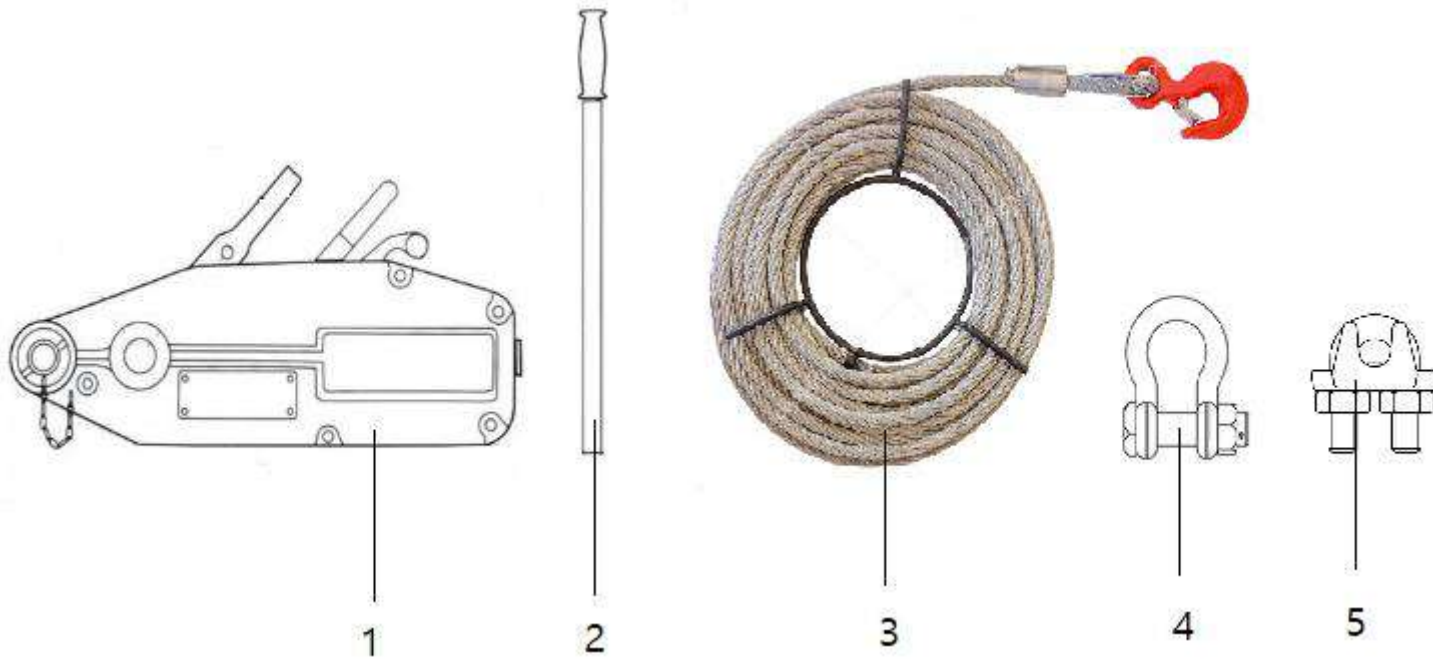
10	*	RING, BACK-UP	1						
-	20 4390 O	SEAL KIT	1	PARTS MARKED*					
<b>VALVE, MAIN CONTROL</b>								<b>40FT-11:0 2019. 06</b>	





		<b>VALVE, MAIN CONTROL</b>					<b>40FT-11:0 2019.06</b>		
NO.	PART NO.	DESCRIPTION	Q'TY	REMARK	NO	PART NO.	DESCRIPTION	Q'TY	REMARK
1~10	50 0904 H	CONTROL VALVE ASS'Y	1						
1	-	BLOCK, INLET	1						
2	-	BLOCK, END COVER	1						
3	-	BLOCK, WORK	3						
4	-	SPOOL, STD	2						
5	-	SPOOL, CR OPEN	1						
6	-	MAIN RELIEF VALVE	1						
7	-	BOLT, TIE	4	M8x190					
8	-	CAP, RETURN	3						
9	-	PLATE, SEAL	3						

10	-	BRACKET, LEVER	3							
-	-	SEAL KIT	1							
		<b>TRIFOR KIT</b>							<b>40FT-12:0</b> <b>2019.06</b>	



		<b>TRIFOR KIT</b>					<b>40FT-12:0</b>		
							<b>2019.06</b>		
NO.	PART NO.	DESCRIPTION	Q'TY	REMARK	NO	PART NO.	DESCRIPTION	Q'TY	REMARK
1~5		TRIFOR KIT							
1	50 1496 O	WINCH,	1						
2	-	HANDLE	1						
3	-	ROPE, WIRE	1						
4	89 6427 O	SHACKLE	1						
5	20 0296 O	CLIP, WIRE	4						

